

ISO 9001:2000

The International Tanker Management Group.

The Tanker Manager



ISO 14001

ISO 9001:2000

# Risk Assessment in Tanker Operations

Captain Jitender Seth, ITM  
Vince Jenkins, DNV

Tanker Operators Conference  
3-4<sup>th</sup> February 2004, London

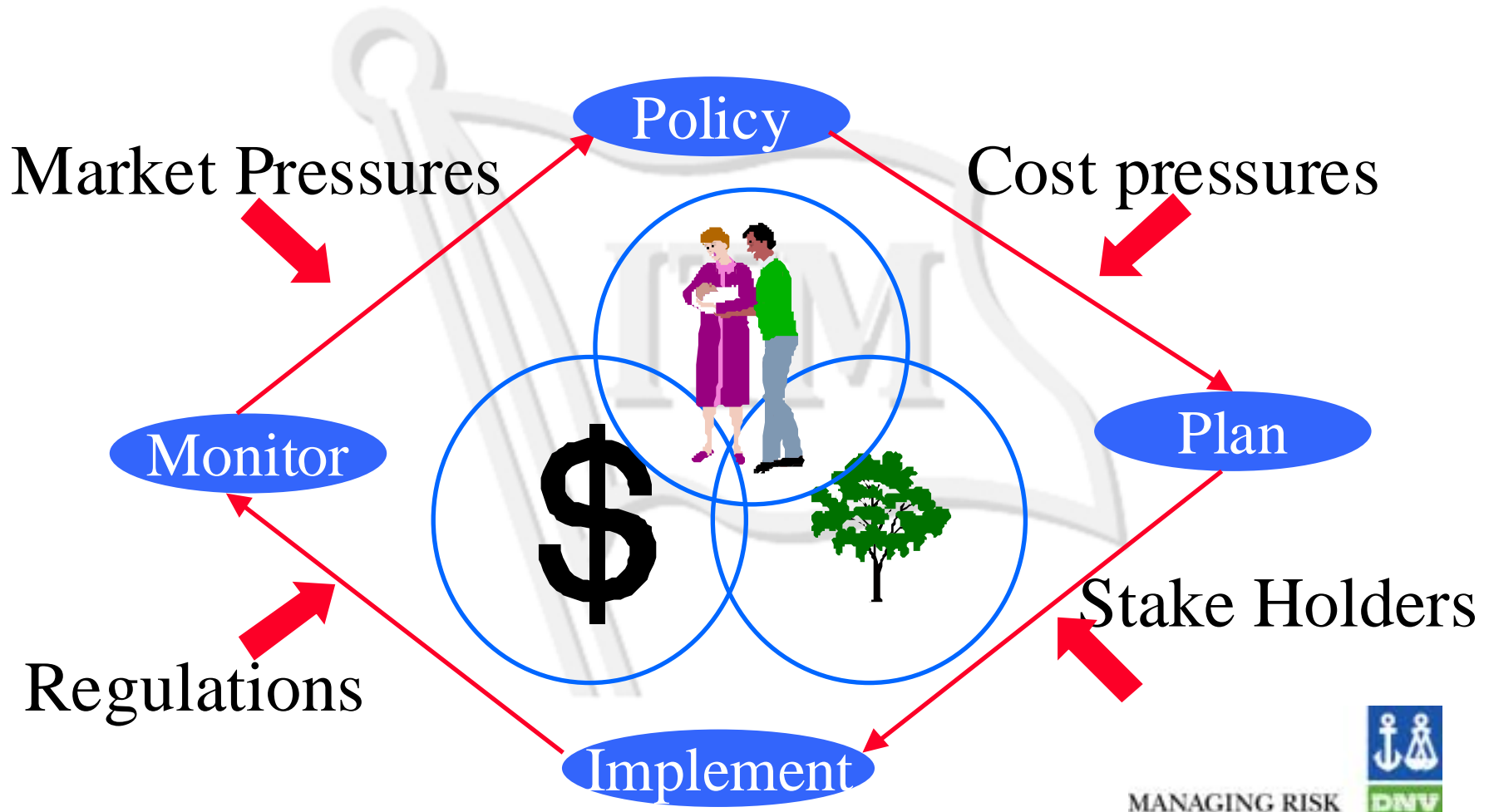


ISO 14001

# Introduction

- Why adopt formal risk assessment techniques
- How we have gone about this
- What we have done
- Benefits we have seen so far
- How might this be used in the future

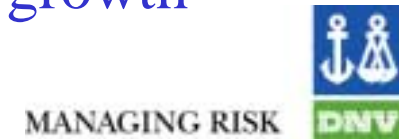
# Why the need for formal risk assessment ?



# *MISSION STATEMENT & VALUES*

**To be a leading tanker manager and preferred partner to the global shipping industry, by ensuring customer satisfaction through quality services provided by a team of dynamic professionals**

- Integrity
- Work as a team
- People are the source of strength, show respect and concern
- Continuous improvement and innovation
- Every employee is equally important
- Encourage individual initiative and personal growth



## How - Where did we start ?

- Understand
  - Training
- Gain experience
  - Project
- Introduced to:
  - Senior ship staff
  - Clients



# What has been done – the project (1)



- Loading/discharging operations manual for ITM
  - Would it reflect the risk we actually face?
  - Would it reflect our tolerability of those risk?
- Risk Assessment for:
  - All loading discharging operations
  - All terminal facilities, across the fleet

## What has been done – the project (2)

- Develop risk targets for the project
- Spend time onboard a representative vessel
- Undertake the risk assessment



## The project (3) - Risk Targets

- Risk targets set in 3 key areas
  - Safety
  - Media impact
  - Commercial damage





Safety: Summary: Time1 (29/Jul/2003)



Likelihood

Close

Report

A

B

C

D

E

F

G

H



Risk Criteria

- Intolerable
- Tolerable
- Broadly acceptable

Severity



Media Impact: Summary: Time1 (29/Jul/2003)



Likelihood

Close

Report

A

B

C

D

E

F

G

H

Risk Criteria

- Intolerable
- Tolerable
- Broadly acceptable



5

4

3

2

1

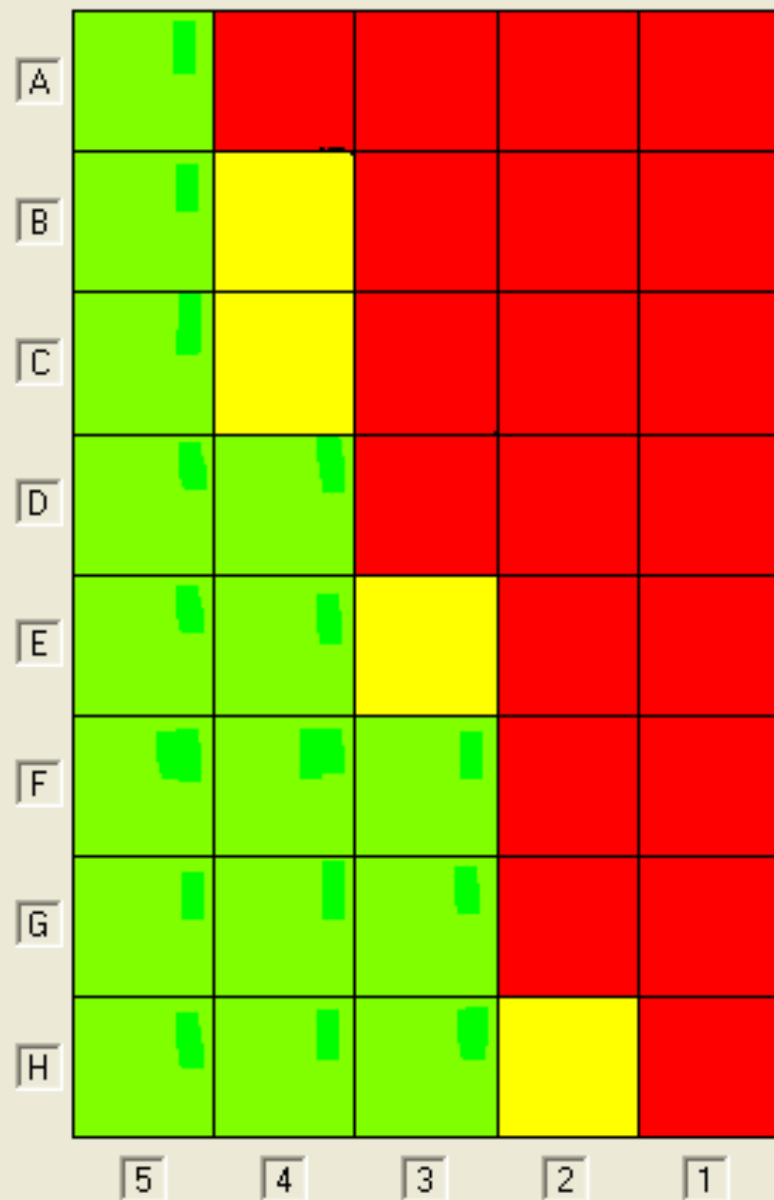
Severity



Likelihood

Close

Report



Risk Criteria  
■ Intolerable  
■ Tolerable  
■ Broadly acceptable

Severity

# The project (7) - Visit on board

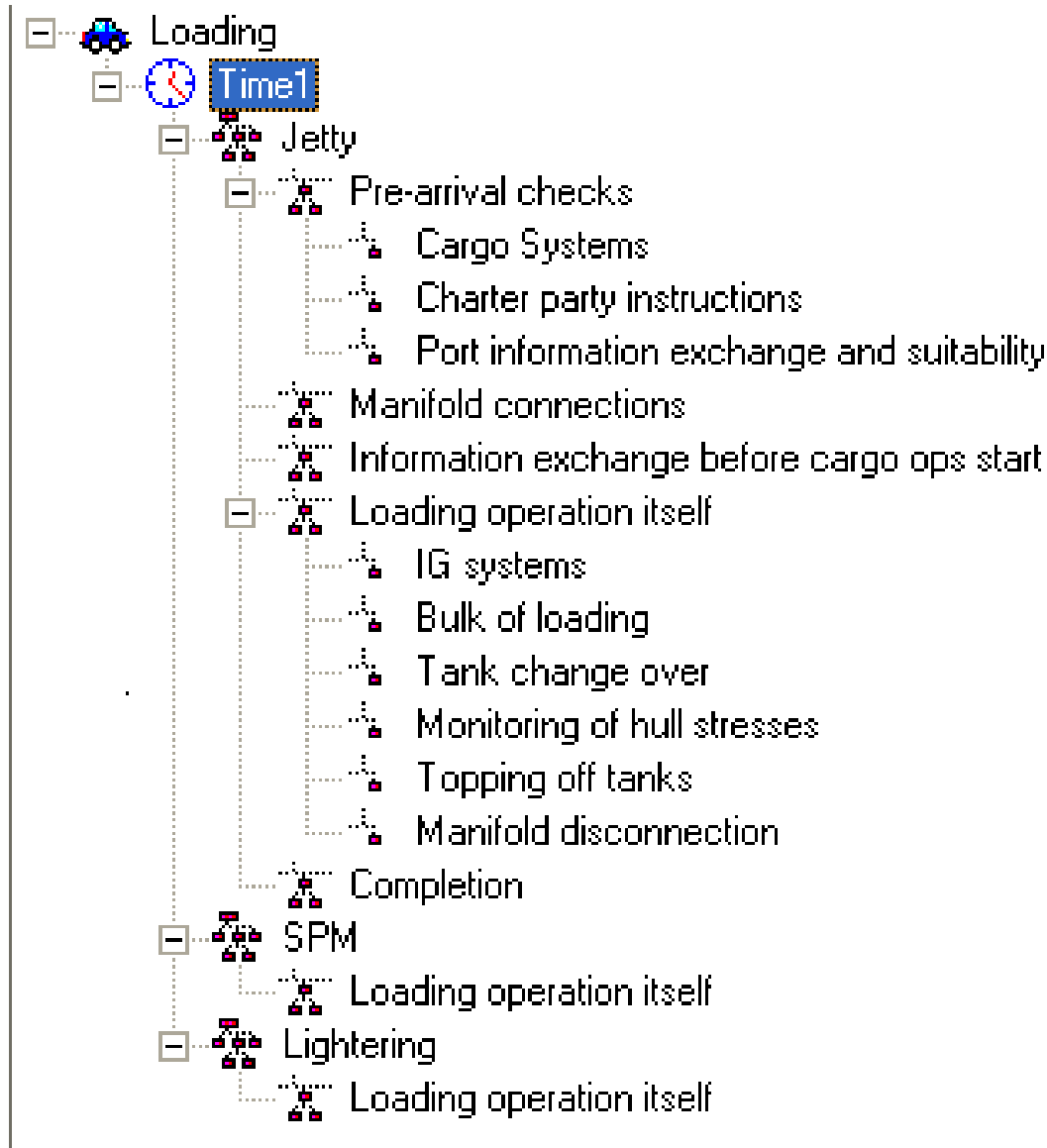
- Objectives
  - Witness representative ITM loading/discharge(s)
    - Confirm structure of the study
    - Detail areas of potential hazards
    - Focus subsequent RA
  - Involve ships company in process

# The project (8) - Risk Assessment

- DNV facilitating
- ITM
  - Shore staff ~ various competencies
  - Ship staff
    - Master
    - Chief Engineer
- Week of effort



# The project (6) - Risk Assessment





Safety: Summary: Time1 (29/Jul/2003)



Likelihood

Close

Report

A	0	0	0	0	0	0
B	0	0	0	0	0	0
C	0	0	0	0	0	0
D	4	0	0	0	0	0
E	3	2	0	0	0	0
F	14	19	1	1	1	0
G	1	1	2	0	1	0
H	2	0	0	1	0	0
	6	5	4	3	2	1

Severity

Risk Criteria

- Intolerable
- Tolerable
- Broadly acceptable



Media Impact: Summary: Time1 (29/Jul/2003)



Likelihood

Close

Report

A	0	0	0	0	0
B	0	0	0	0	0
C	0	0	0	0	0
D	2	3	0	0	0
E	1	7	0	0	0
F	4	31	2	3	0
G	0	1	3	1	0
H	2	0	1	0	0
	5	4	3	2	1

Risk Criteria

- Intolerable
- Tolerable
- Broadly acceptable

Severity

Commercial Damage: Summary: Time1 (29/Jul/2003)



Likelihood

Close

Report

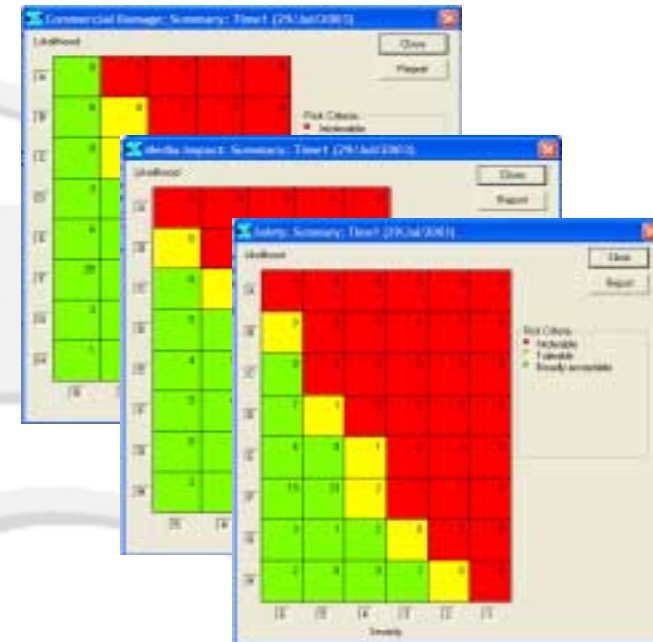
A	0	0	0	0	0
B	0	0	0	0	0
C	0	0	0	0	0
D	1	0	0	0	0
E	3	4	0	0	0
F	18	22	1	1	1
G	2	3	2	0	0
H	1	2	0	0	0
	5	4	3	2	1

- Risk Criteria
- Intolerable
  - Tolerable
  - Broadly acceptable

Severity

# The Benefits

- Defined what risk is acceptable to ITM
- Evaluated the risk
- Understand our risk exposure
  - Prioritised action plan
- Operations manual
  - Focused on the areas that **matter**



MANAGING RISK

DNV

ISO 14001

# Its future use

- Within ITM..... ??
  - On board ship
  - Due diligence
  - Major investments
  
- Within the industry



# Conclusions

- Reviewed why ITM have trialled formal risk assessment techniques
- How we have gone about this & what we have done so far
- Benefits we have seen so far
- How might this be used in the future
  - Within ITM
  - Within the industry

ISO 9001:2000

# ITM

**THE TANKER MANAGER**

2004-02-19



ISO 14001